

MICROCUT



MicroPanther 446

CNC Flat Bed Lathe



National Award
of Outstanding



ISO 9001:2015
FM 538421



ISO 14001:2015
EMS 546518



ISO 50001:2011
ENMS 642457

Extremely High Value Lathe

MICROCUT MicroPanther 446 offers high spindle speed, high power output and torque and fast rapid feed rate

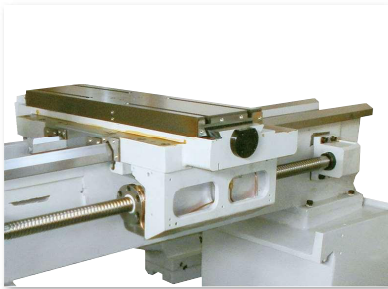
Rapid Feed Rate
15m/min
 2 TIMES FASTER
 than the average lathe
 of the same level

Machining
 productivity is
 enhanced with shorter
 process time



Photo shown:
 MicroPanther 446 / Fagor 8055i FL controller

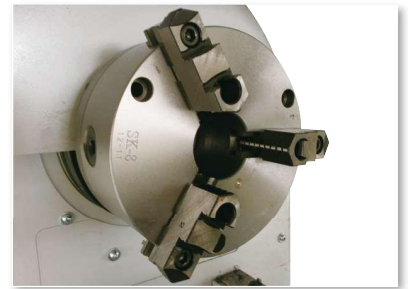
Features



Optimal axes structure
 X and Z axes featuring box way design assure the best possible machine rigidity and stability



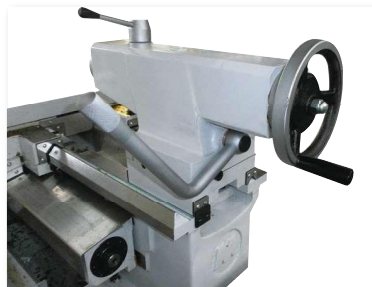
Easy-clean design
 Two-layer collection drawers with filter function to separate chip filings and coolant



Durable and efficiency clamping
 Hydraulic 6" 3-jaw chuck (option) with a variety of hard and soft jaws (thru-hole dia. 40mm)



CE-regulated cabinet
 24Vac low voltage circuit control system



Easy operation tailstock
 High rigid tailstock provides excellent support when machining. Hydraulic tailstock is available for option.

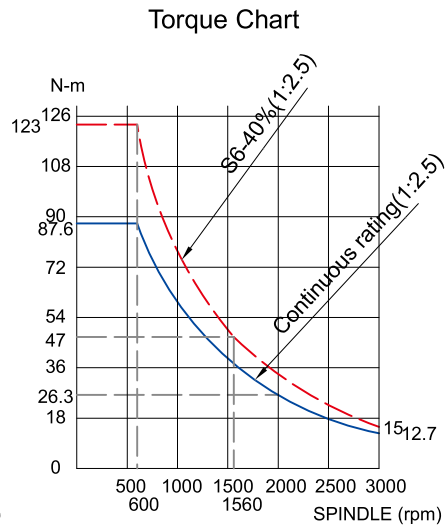
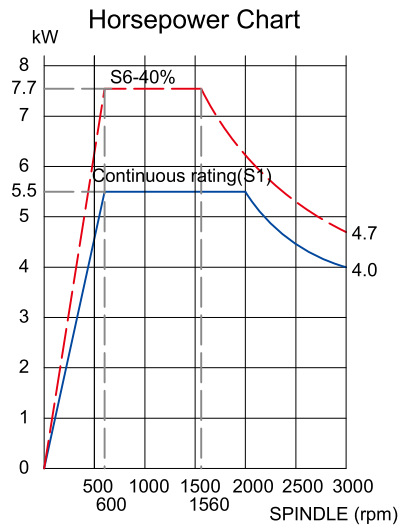


FAGOR 8055i FL controller SIEMENS 828D BASIC controller

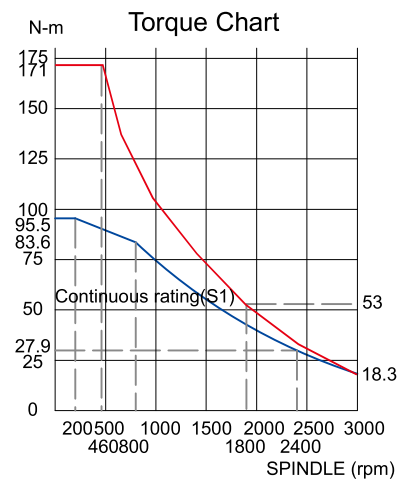
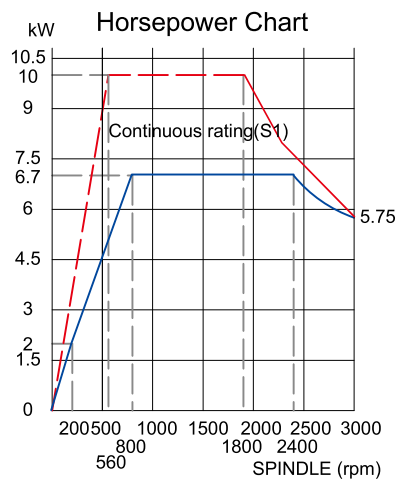
User-friendly swivel panel
 Friendly conversational CNC offers versatile and power programming features. Good for manual, Teach-in and automatic operation program

Horsepower & Torque Charts

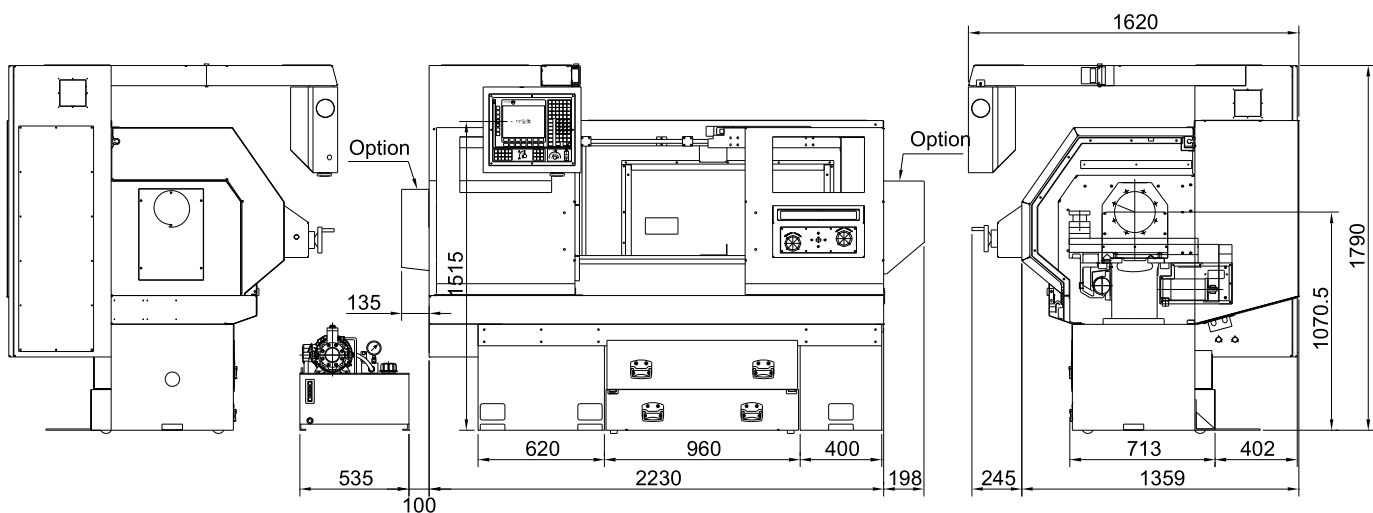
FAGOR 5.5/7.7 kW Spindle



SIEMENS 7/10 kW Spindle

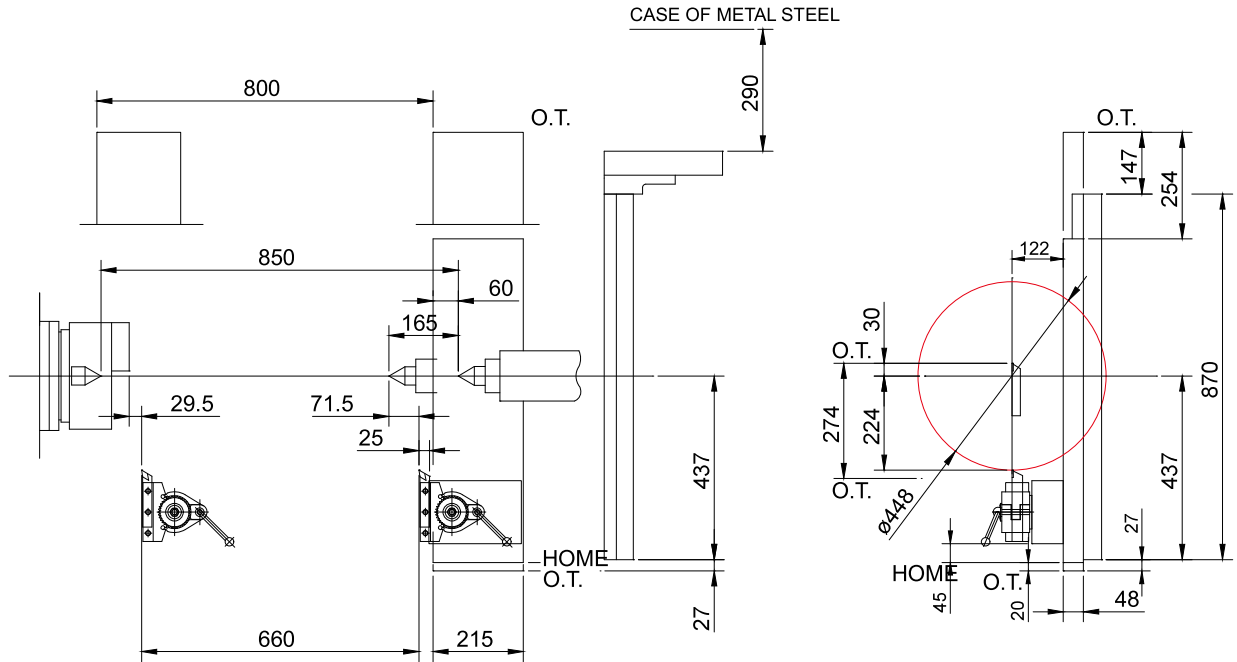


Layout Drawing

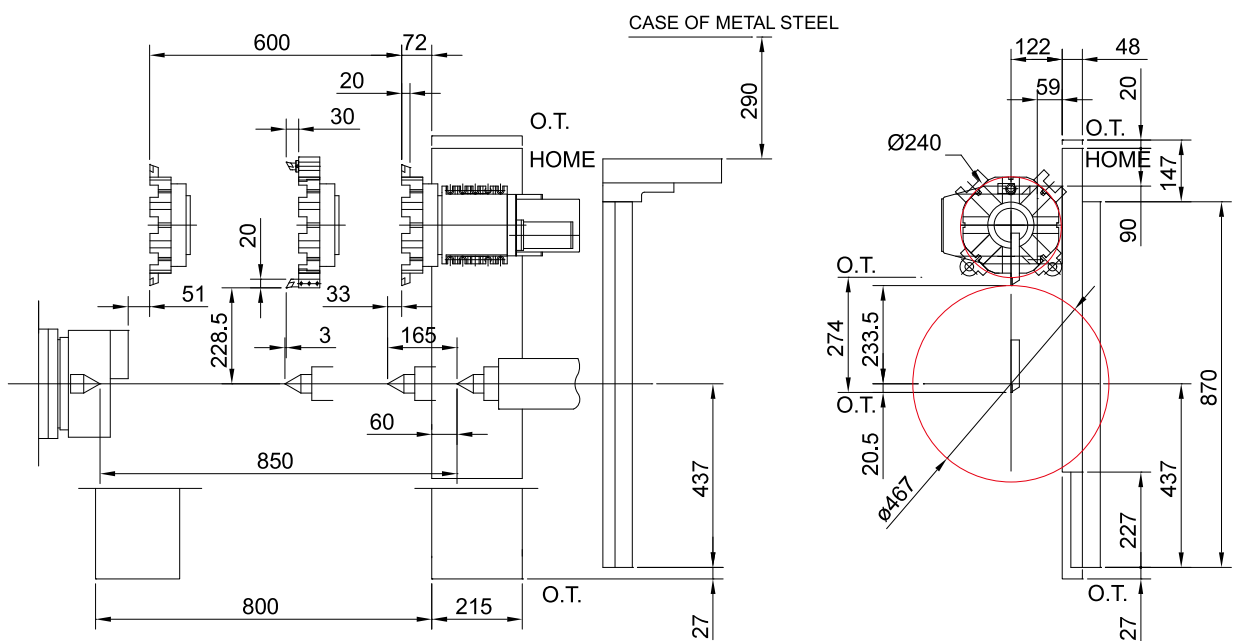


Interference Drawing

Multifix-B QCT at front



Hydraulic LS-120 regular type 8 tools at rear (Option)



Specifications

Item	Unit	MicroPanther 446
Capacity		
Swing over bed	mm	446
Swing in gap	mm	546
Swing over cross slide	mm	240
Distance between centers	mm	850
Max. turning length(w/ turret)	mm	650(QCT); 600(LS)
Bar capacity (Hyd. chuck cylinder)	mm	39(for 52 bore)
Gap length from spindle nose surface	mm	243
Travel		
X axis	mm	250
Z axis	mm	760
Spindle		
Spindle nose	mm	A2-5
Spindle hole diameter	mm	ø52
Suitable chuck size	mm	6"-8"
Transmission		Belt (1: 2.5)
Spindle speed	rpm	3000
Motor power	kW	Fagor: 5.5/7.7 ; Siemens: 7/10; Fanuc: 5.5/7.5
Axes Transmission		
X axis ballscrew	mm	ø25 × P5 × C3
X axis transmission		Belt (1:1)
X axis power	Nm	Fagor: 6.3; Siemens: 6; Fanuc: 7
Z axis ballscrew	mm	ø40 × P10 × C5
Z axis transmission		Direct
Z axis power	Nm	Fagor: 6.3; Siemens: 8.5; Fanuc: 11
Guideway		
X axis guideway type		Dovetail guideway
X axis guide distance	mm	215
Z axis guideway type		Box way
Z axis guide distance	mm	300
Axes feed rate		
X axis rapid traverse	m/min	15
Z axis rapid traverse	m/min	15
Jog feed	m/min	3
Cutting feed rate		
X axis cutting feed	m/min	5
Z axis cutting feed	m/min	5
Tailstock		
Quill stroke	mm	165
Quill diameter	mm	65
Quill inside taper	MT	4
Coolant		
Pump motor	W	270(50Hz)/350(60Hz)
Max pump flow	L/min	80(50Hz)/95(60Hz)
Max pump pressure	kg/cm ²	7(50Hz)/10(60Hz)
Lubrication		
Pump motor	W	12
Max pump flow	L/min	0,13
Max pump pressure	kg/cm ²	8
Dimension		
Weight	kg	2600
Length	mm	2230 (Not incl. tailstock cover, heat exchanger and rotary cylinder)
Width	mm	1620 (incl. control panel)
Height	mm	1790
Total power consumption	KVA	Fagor:15 ; Siemens:15 Siemens:15 ; Fanuc:15

*Specifications are subject to change without notice.

Standard Accessories

- CNC control Fagor or Siemens
- Fagor / Siemens package servo motor including spindle and axis servo motors
- A2-5 Ø52mm spindle bore
- Single speed
- Tailstock
- Fully enclosed splash guard with interlock safety device
- Coolant system
- Automatic lubrication system
- Quick Change Tool Post, Multifix-B, including 3 of square tool holders & 1 of bar holder
- Swivel control panel
- Tool set & box, level pads, operation manual & parts list
- CE-regulated
- Heat exchanger

Optional Accessories

- A2-6 Ø76mm spindle bore
- 3-jaw chuck (Hydraulic or Manual)
- Manual 4-jaw chuck
- Steady rest
- Follow rest
- Work light
- Coolant through tool(20bar)
- Hydraulic turret LS-120 regular type/8 tools rear mounted
- Toolholder package (for LS-120 regular turret)
- LS turret preparation (riser block & wiring only)
- Joy sticker
- EMC
- Transformer
- Fagor Options--
 - * Extra Fagor I/O module
 - * CF card 2G
 - * Fagor Service Contract for 12 months
- Portable MPG
- Tailstock end cover with limit switch
- Hydraulic tailstock quill
- Oil skimmer



BUFFALO MACHINERY CO., LTD.

56, Lane 318, Desheng Road, Daya District,
Taichung City 428-46, Taiwan
P.O. Box 320, Daya, Taichung City, Taiwan
Tel: +886-4-25 60 37 59 Fax: +886-4-25 60 37 69
E-mail: info@mail.buffalo.com.tw
www.buffalo-machinery.com



MICROCUT EUROPE

Ulica hrvatskih branitelja 3
10430 Samobor CROATIA
Tel. +385 1 3141 515
Fax. +385 1 3141 516
info@microcut-europe.eu
www.microcut-europe.eu

